

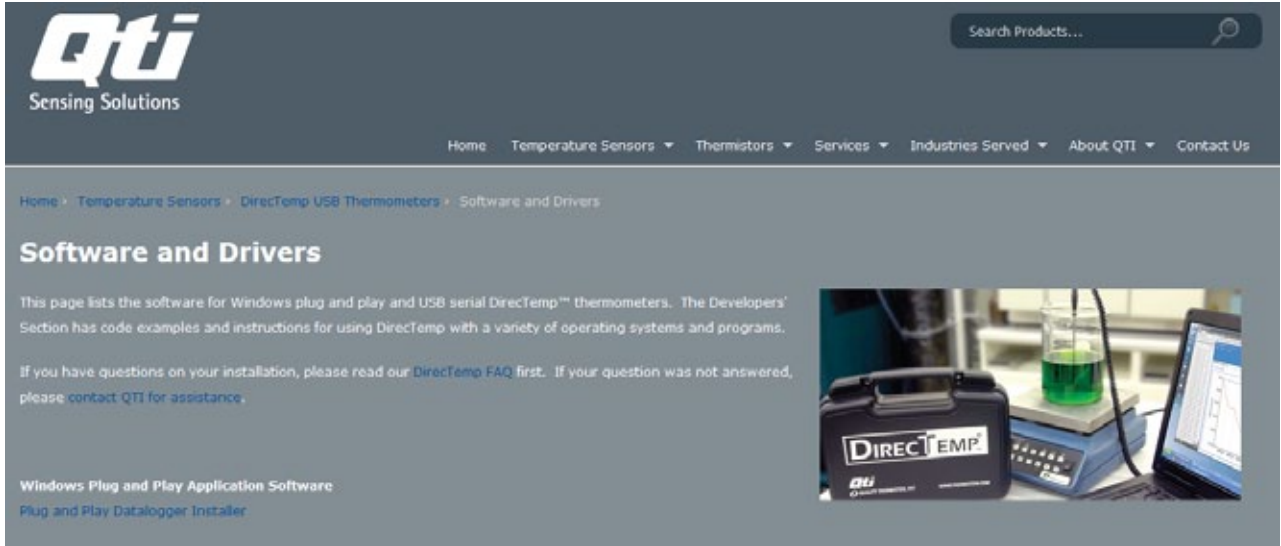


DIRECTEMP™ USB THERMOMETER PLUG AND PLAY INSTALLATION GUIDE

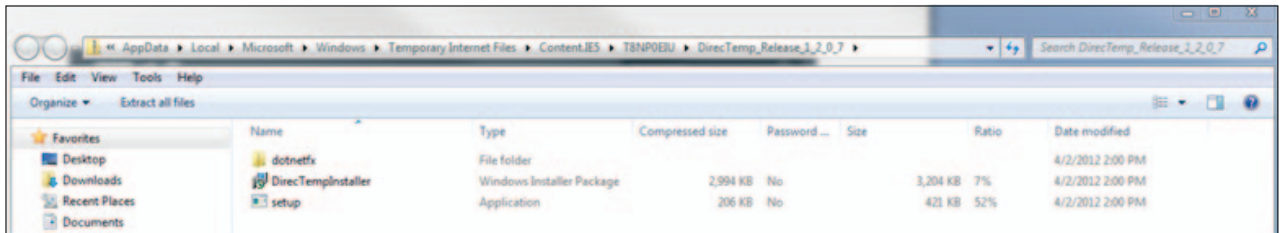


PLUG AND PLAY DRIVER INSTALLATION

1. Visit www.thermistor.com/software-and-drivers to download the plug and play DirecTemp software. On the web page, click on **PLUG AND PLAY DATALOGGER INSTALLER** to download the software, and **SAVE** or **RUN** the file.

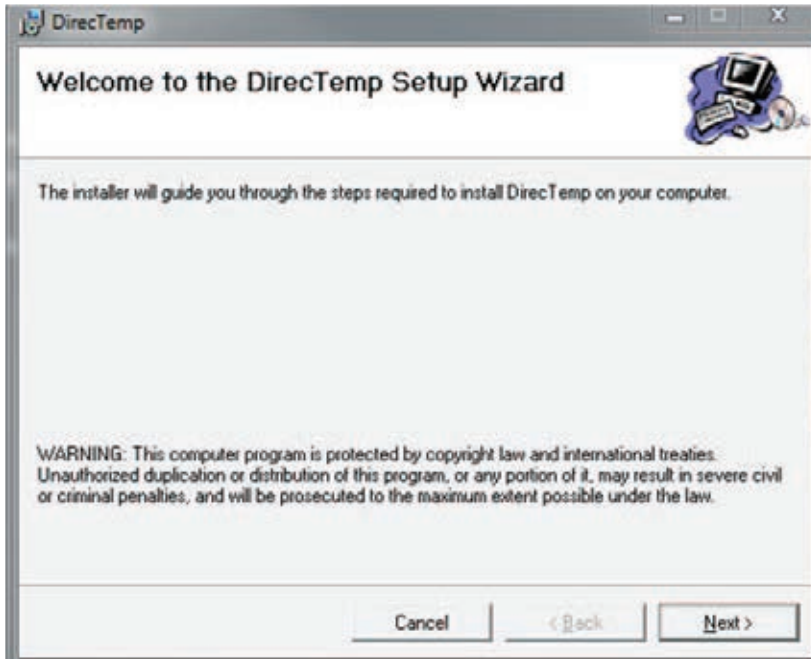


2. Windows will open the files as shown below:

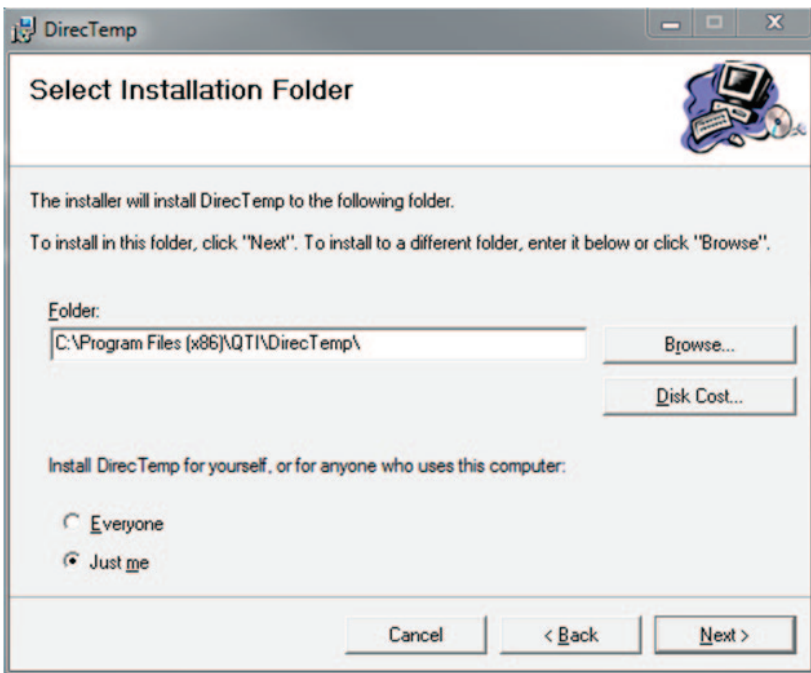


Double click **SETUP**. In the dialog box that opens, select **YES** to allow the program to make changes to the computer.

3. Select **NEXT**.



4. Select the location for the program to install.



5. Follow the prompts and click **CLOSE** when finished.

6. Plug the DirecTemp into the USB port and open the DirecTemp software.

THANK YOU FOR CHOOSING DIRECTEMP!

Visit www.thermistor.com for

- answers to frequently asked questions
- software code examples
- additional DirecTemp probe styles
- recalibration information



DIRECTEMP[®]

Qti
Sensing Solutions

WWW.THERMISTOR.COM